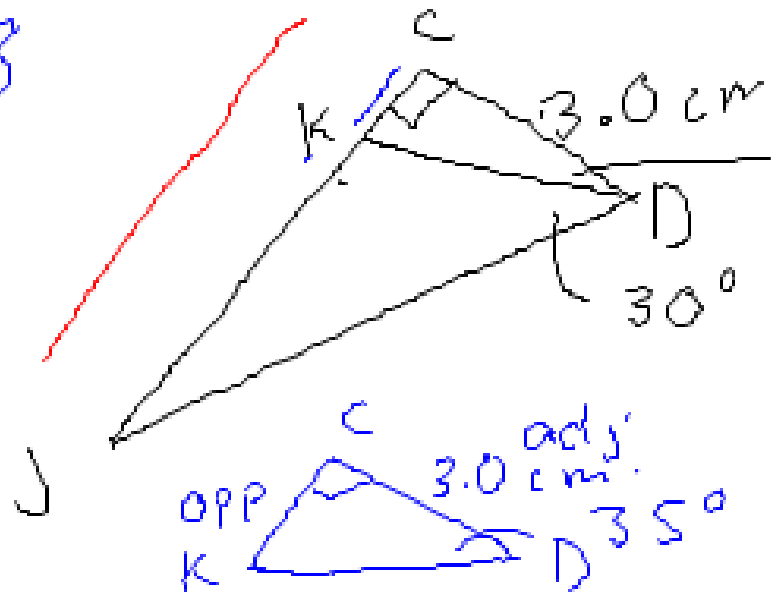
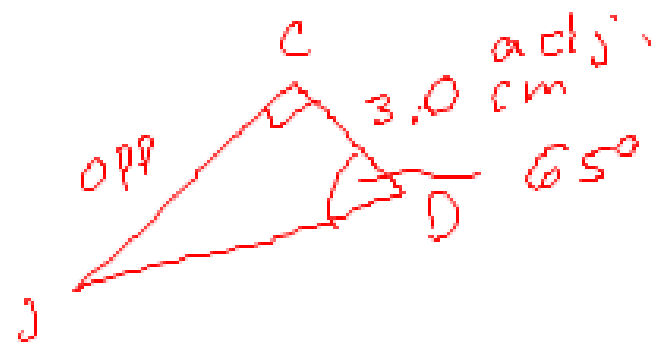


p. 118
3c



Find JK.
nearest tenth.



$$\tan \theta = \frac{O}{A}$$

$$\tan 35 = \frac{KC}{3.0}$$

$$KC = 2.1006 \dots$$

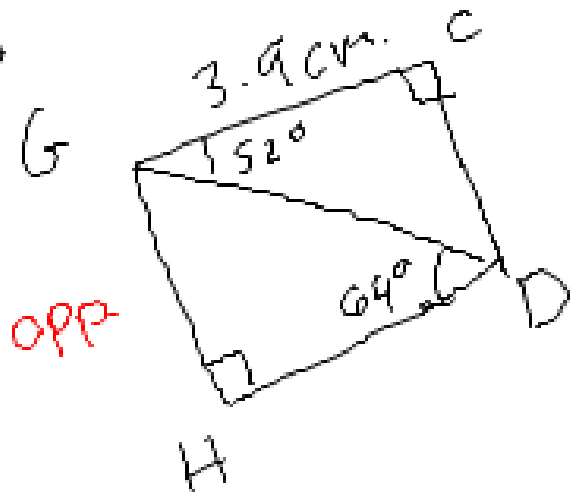
$$\tan 65 = \frac{JC}{3.0}$$

$$JC = 6.4335$$

$$JK = 6.4335 - 2.1006 = 4.3 \text{ cm}$$

p. 118

4 c) G



⑤ Find GH.

$$\sin \theta = \frac{\text{opp}}{\text{hyp}}$$

$$\sin 38 = \frac{GH}{6.3347}$$

GH to nearest tenth.

① Find GD

$$\cos \theta = \frac{\text{adj}}{\text{hyp}}$$

$$\cos 52 = \frac{3.9}{GD}$$

$$GD = \frac{3.9}{\cos 52} = 6.3347 \text{ cm.}$$

$$GH = 5.69 \dots \text{ cm.}$$

$$GH = 5.7 \text{ cm}$$